

REVIEWING PROCESS AND QUALITY ASSESSMENT

at KiKa



KiKa's Scientific Board

For the assessment of applications, KiKa is advised by the Scientific Board KiKa (WR KiKa). The WR KiKa is composed of distinguished independent cancer researchers. Each member of the WR KiKa has a specific expertise, which together cover all aspects of cancer research.

The WR KiKa consist of the following members:

- Prof. dr. Marike Broekman (Chairman)
- Prof. dr. Roderick Beijersbergen (Vice-chairman)
- Prof. dr. Mirjam Heemskerk
- Prof. dr. John Martens
- Prof. dr. Lonneke van de Poll
- Dr. Mirjam Crul
- Prof. Dr. Joop Jansen
- Prof. dr. Winette van der Graaf
- Prof. dr. Joost Verhoeff
- Prof. dr. Taco Kuijpers

Reviewing process of (pilot) projects and programs

- No preselection is applied. However, KiKa can decide not to take an application into further consideration based on advice of the WR KiKa.
- All multi-annual research projects are first reviewed by at least two independent national and international external reviewers. The reviewers judge the scientific quality of the proposal, the proposed methodology, the feasibility of the project, the track record of the applicants, and the relevance of the application for pediatric oncology.
- Pilot projects are reviewed by the WR KiKa. On a case-by-case basis, the WR KiKa decides whether or not the application will be reviewed by external reviewers.
- Program pre-applications are reviewed by the WR KiKa. The WR KiKa advises on which applicants to invite to submit a full program application.
- Full program applications are reviewed by at least three independent national and international external reviewers. Apart from the criteria on which projects are judged, programs are additionally assessed on opportunities for valorisation, translation and implementation of the research, and the added value compared to multiple project applications.
- The WR KiKa judges if the proposal is of sufficient scientific quality, is feasible, relevant, and contributes to KiKa's mission. The WR KiKa advises the KiKa board

if she deems the proposal eligible for funding. Based on comments given by the reviewers or the WR KiKa, the project leader(s) can also be asked by KiKa to first answer some specific questions and/or adapt the proposal (resubmission) before a definitive advice will be given.

- The KiKa board decides which proposals will be funded, based on the available budget.
- The decision of the KiKa board will be communicated as soon as possible to the project leader(s).
- The procedures described above can be adapted or accelerated when KiKa considers this necessary.
- A resubmission will be reviewed by the WR KiKa. The WR KiKa can advise to send the resubmission to external reviewers.
- Only when a decision to reject an application is based on **factual inaccuracies**, the project leader(s) can appeal against the decision by writing a rebuttal letter. This letter can be sent to research@kika.nl.

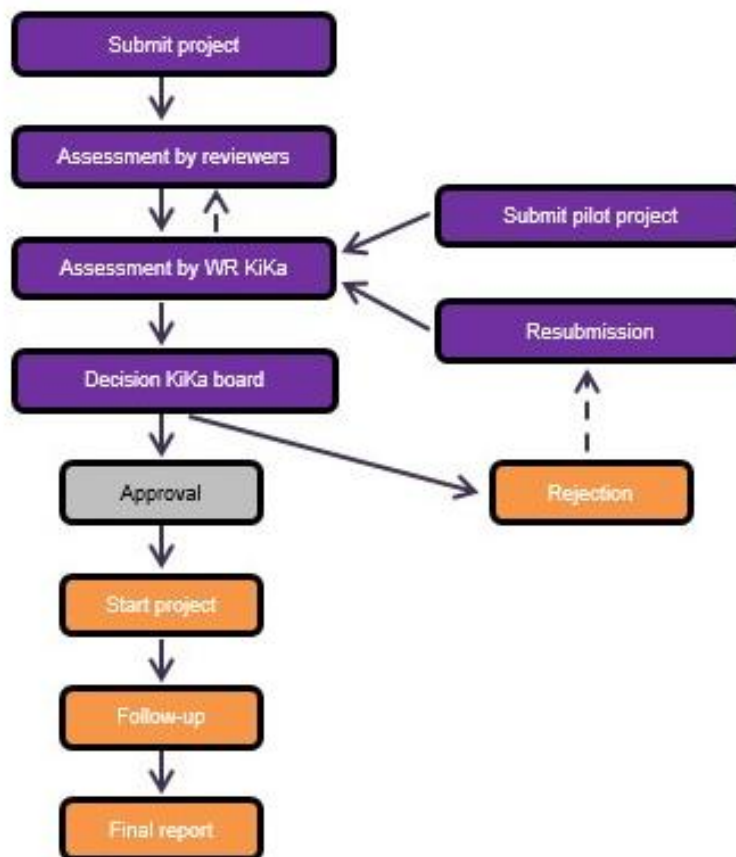
Quality assessment of ongoing projects and programs

The progress of ongoing projects and programs is assessed by KiKa at fixed moments. KiKa reserves the right to stop financing of a project if KiKa judges the progress to be insufficient. Progress will be assessed at three moments:

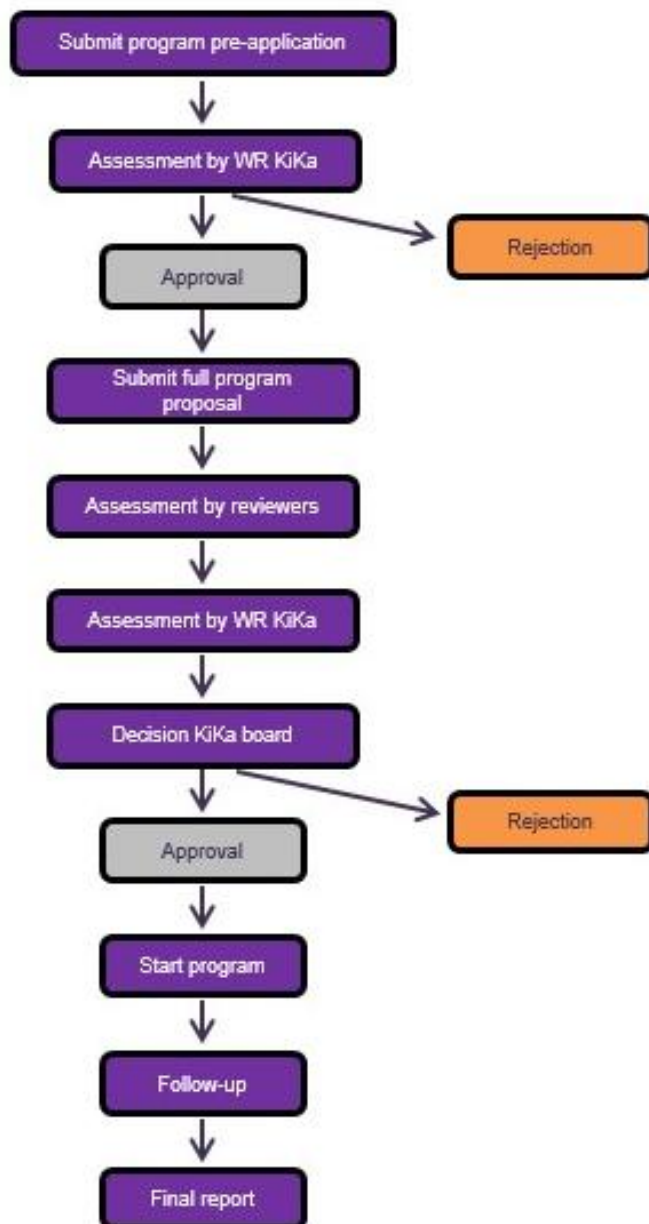
- **Kick-off and progress meetings:** KiKa organizes regular meetings with the project leaders to discuss the project and its progress.
- **Mid-term review:** projects that have a duration of more than two years will be evaluated during a KiKa mid-term review meeting. During this meeting, that is organized annually, the projects will be assessed by the mid-term review committee. This committee consists of a panel of scientific experts. The mid-term review committee is chaired by a member of the WR KiKa. The mid-term review committee report its findings to the KiKa board (who decides about the continuation of funding). A negative assessment might result in (temporary) discontinuation of funding.
- **Final report:** when a project is finalized, the results and output of the research need to be reported. This report will be assessed by the WR KiKa.

Below, the KiKa reviewing process and quality assessment are depicted schematically.

Research (pilot) projects



Research programs



Questions?

Contact the research team of KiKa via research@kika.nl.